

1. FLOOR LEVELING REQUIREMENTS, SALES AREA- MAX SLOPE 2% STOCKROOM (FOR MOBILE SHELVING PAD: MAX SLOPE 0.5%)
2. FIRE ALARM/STROBE - AUDIO/VISUAL ALARM SYSTEMS WILL FOLLOW ADA REQUIREMENTS. MOUNT/SUSPEND ALARM AS TO NOT INTERFERE WITH DISPLAY FIXTURES.
3. DIMENSIONS ARE FROM GYP. FINISH TO GYP. FINISH UNLESS OTHERWISE NOTED.
4. AT OPEN CEILING LOCATIONS, CONDUIT AND SPRINKLER PIPING SHALL RUN STRAIGHT AND TRUE OPEN CEILINGS WITH CONDUIT AND DUCTWORK EXPOSED SHALL BE PAINTED PER THE FINISH SCHEDULE.
5. GENERAL CONTRACTOR IS RESPONSIBLE FOR INSTALLATION OF IN-WALL METAL BLOCKING FOR ALL WALL HUNG ITEMS IN STORE.

#### DEMOLITION

(EXTENT OF DEMOLITION): REFER TO DEMOLITION PLAN.

#### DEMISING

(E) DEMISING WALLS: G.C. TO REPAIR OR REPLACE 5/8" GYP. BD. TYPE 'X' IF REQUIRED TO MAINTAIN 1-HR FIRE RATING (U.L. #U419). SEE NOTE ON DEMOLITION PLAN FOR (E) CONSTRUCTION.

(N) DEMISING WALL (1 HOUR RATED): 6" MTL. STUDS BY LANDLORD WITH (1) LAYER 5/8" TYPE 'X' GYPSUM BOARD TENANT SIDE ONLY, TIGHT TO DECK ABOVE BY G.C. (U.L. #U419).

#### INTERIOR PARTITIONS

(N) FIRE RATED SHAFT WALL (TIGHT TO DECK): 1-HR FIRE RATED SHAFT PARTITION BY G.C., 2 1/2" MTL. 'CH' STUDS @ 24" O.C. MAX. WITH (1) LAYER OF 1" GYP. BD. ON INTERIOR SIDE AND (1) LAYER OF 5/8" TYPE 'X' GYP. BD. ON EXTERIOR SIDE. EXTEND GYP. BD. TIGHT TO DECK ABOVE. COORDINATE LOCATION & CONTINUITY OF SHAFT W/ LANDLORD AND TENANT BELOW. (U.L. #U489).

(N) FIRE RATED ALCOVE WALL: 3 5/8" MTL. STUDS @ 16" O.C. MAX. BY G.C. WITH 5/8" TYPE 'X' GYP. BD. ON BOTH SIDES. BY G.C. EXTEND GYP. BD. TO RATED CEILING ABOVE. (REFER TO SPECIFIC DETAILS).

(N) PARTITION WALL: (1) LAYER 5/8" GYP. BD. EACH SIDE ON 3 5/8" MTL. STUDS @ 16" O.C. AS INDICATED ON PLAN. INSTALL GYP. BD. ON ONE SIDE ONLY AT BACK TO BACK OR AT PERIMETER WALL CONDITIONS. GYP. BD. ONLY EXTENDS TO 14'-0" A.F.F. ON SALES FLOOR SIDE. (REFER TO SPECIFIC DETAILS).

(N) SALES / NON-SALES WALL: 3 5/8" MTL. STUDS @ 16" O.C. TO DECK. INSTALL GYPSUM BOARD TO CEILING, ON SALES FLOOR SIDE AND TO DECK ABOVE ON NON-SALES SIDE. (REFER TO SPECIFIC DETAILS).

#### INTERIOR PARTITIONS

(N) FURRING WALL: (1) LAYER 5/8" GYP. BD. ON 7/8" MTL. CHANNELS @ 24" O.C.

(N) PARTIAL HEIGHT PARTITION WALL: (1) LAYER 5/8" TYPE 'X' GYP. BD. ON EACH SIDE (OR ONE SIDE @ PERIMETER CONDITIONS) OF 3 5/8" MTL. STUDS. WALL ONLY EXTENDS TO 8'-6" A.F.F. - REFER TO SPECIFIC DETAILS.

#### GENERAL CONTRACTOR TO CONFIRM ACTUAL FIELD CONDITIONS, AND COMPLY WITH INDICATED INSTRUCTIONS.

(E) DEMISING WALLS TIGHT TO DECK:

\* REPAIR DRYWALL SURFACES TO LIKE NEW CONDITION.

(E) DEMISING WALLS TIGHT TO DECK:

\* INSTALL ADDITIONAL MTL. FRAMING AND DRYWALL AS REQUIRED TO COMPLETE DEMISING WALL TIGHT TO DECK.

(E) DEMISING WALLS SHORT OF DECK:

\* REQUIRED DUE TO COMMON HVAC PLENUM AND APPROVED BY BUILDING DEPARTMENT - \* INSTALL 1/2" WIRE MESH SECURITY SCREEN FROM TOP OF PARTITION TIGHT TO DECK ABOVE - G.C. MUST ADVISE OWNER'S CONSTRUCTION MANAGER OF ACTUAL FIELD CONDITIONS IN ORDER TO OBTAIN SPECIFIC INSTALLATION INSTRUCTIONS.

COLUMN NOTES: G.C. TO WRAP ALL STRUCTURAL WALL COLUMNS WITHIN LEASED SPACE WITH 5/8" GYP. BD. TYPE 'X' FIRE-RATED ENCLOSURE TO OBTAIN REQUIRED RATING AS ESTABLISHED BY STATE AND LOCAL CODES AND/OR BY LANDLORD. COLUMNS ARE TO BE WRAPPED TIGHT TO MAINTAIN A MINIMUM SIZE ENCLOSURE, U.N.O. ON DRAWINGS.

- ① LEASE LINE
- ② (E) BULKHEAD - REFER TO STOREFRONT SECTIONS
- ③ DEMISING WALL - REFER TO DETAIL J/A02.1
- ④ ELECTRICAL PANELS - REFER TO ELECTRICAL DRAWINGS
- ⑤ 2"X 2" X 48" X 0.63" ALUMINUM CORNER GUARD
- ⑥ NEUTRAL PIER - REFER TO STOREFRONT DETAILS
- ⑦ MOP SINK - REFER TO DETAIL A/A13.1 & A/A11.2
- ⑧ DRINKING FOUNTAIN W/ F.R.P. BACKING - REFER TO DETAIL J/A13.1
- ⑨ G.C. TO INSTALL SOUND ATTENUATION INSULATION IN TOILET ROOM PARTITION
- ⑩ PLUMBING FIXTURES-REFER TO PLUMBING PLAN
- ⑪ G.C. OF DRINKING FOUNTAIN AND PLUMBING WALL

- ⑫ DREAMSTEAMER UNIT - SEE ELECTRICAL DRAWINGS
- ⑬ LEVEL FLOOR AREA FOR MOBILE SHELVING (AS DIMENSIONED) (MAX SLOPE 0.5 %)
- ⑭ SOUND SYSTEM CABINET - REFER TO DETAIL W/A14.3
- ⑮ TELEPHONE - SEE ELECTRICAL DRAWINGS
- ⑯ BACKRAMP SUSPENDED SIGN LETTERS WITH LIGHTS
- ⑰ G.C. TO INSTALL NEW DOOR & FRAME UNITS AS REQUIRED. CONSTRUCT OPENING TO MATCH ADJACENT CONSTRUCTION & FINISH (TYPICAL BOTH SIDES)
- ⑱ LINE OF EXPANSION JOINT - SEE DETAIL G/A12.2
- ⑲ METAL FINISHED ROUND COLUMN ENCLOSURE PROVIDED BY OWNER & INSTALLED BY G.C. SEE DETAIL D/A12.5
- ⑳ (E) DOOR TO BE TACK WELDED SHUT FROM THE INTERIOR OF STORE
- ㉑ (E) FIRE HOSE CABINET TO REMAIN - G.C. TO PROTECT DURING CONSTRUCTION

### CONSTRUCTION FLOOR PLAN NOTES

N.T.S.

M

### PARTITION LEGEND

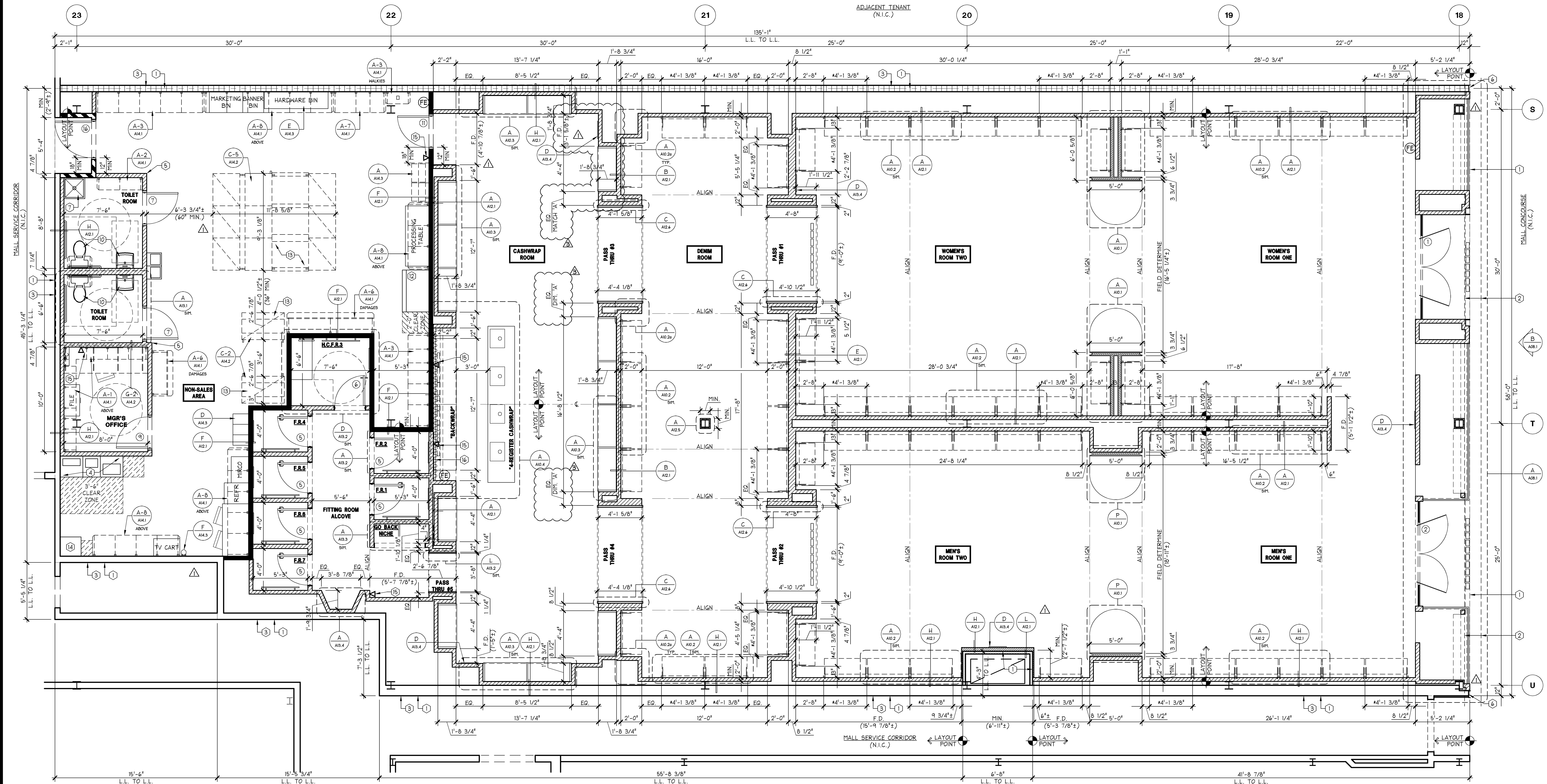
N.T.S.

J

### CONSTRUCTION FLOOR PLAN KEYNOTES

N.T.S.

C



### CONSTRUCTION FLOOR PLAN

REFER TO E/A11.1 FOR STUD SIZE MATRIX

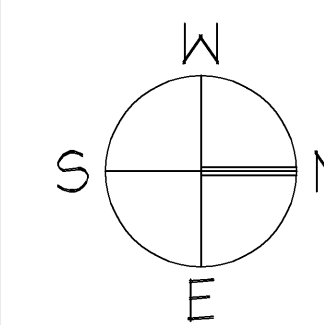
REFER TO A08.1 FOR STOREFRONT FRAMING INFORMATION.

REFER TO G/A00.1 FOR DOOR SCHEDULE & HARDWARE GROUP

\* ON DIMENSION DENOTES MEASUREMENT TO CENTERLINE OF FAUX METAL UPRIGHT & CENTERLINE OF BRUSHED ALUMINUM CEILING RAIL OR CENTERLINE OF FAUX METAL UPRIGHT ONLY.

FIRE EXTINGUISHER NOTE:

(FE) INDICATES FIRE EXTINGUISHER WITH RATING OF 2A10BC LOCATED SO THAT MAX. DISTANCE TO THEM IS NOT MORE THAN 75' COORDINATE EXACT LOCATIONS WITH OWNER'S C.M. & FIRE MARSHAL.



1/4"=1'-0"

A

PROJECT INFORMATION:  
**EXPRESS**  
SPRINGFIELD TOWN CENTER  
584 CC RD. #847  
SPRINGFIELD, VA 22150

REVISIONS:  
1. 04/09/14  
2. 05/06/14

**SHREMSHOCK**  
Shremshock Architects, Inc.  
6700 S. Slatersville Rd., Westerville, OH 43081  
1-614-545-4550 | 1-614-545-4551 | shremshock.com  
Gerald S. Shremshock, Architect  
Timothy J. Shremshock, Architect

ELITE CONSTRUCTION GROUP  
LAKE JACKSON, TX  
PHONE: 979-285-0712  
NOTE: THESE PRINTS HAVE BEEN REDUCED BY 50 PERCENT SCALE WILL BE 50 PERCENT OF WHAT IS NOTED ON PLANS

DATE ISSUED: 02/14/2014  
DESIGNED BY: JKB  
DRAWN BY: KNG  
CHECKED BY: KMM

### CONSTRUCTION FLOOR PLAN

DRAWING NUMBER:  
**A02.1**

712

NEW PACKAGE:  
DG GENERATION:  
94869 /A/E PROJECT #:

SCOPE:  
DESIGN TYPE:  
ESD&C PROJECT #:

SHREMSHOCK  
Shremshock Architects, Inc.  
6700 S. Slatersville Rd., Westerville, OH 43081  
1-614-545-4550 | 1-614-545-4551 | shremshock.com  
Gerald S. Shremshock, Architect  
Timothy J. Shremshock, Architect

ELITE CONSTRUCTION GROUP  
LAKE JACKSON, TX  
PHONE: 979-285-0712  
NOTE: THESE PRINTS HAVE BEEN REDUCED BY 50 PERCENT SCALE WILL BE 50 PERCENT OF WHAT IS NOTED ON PLANS

DATE ISSUED: 02/14/2014  
DESIGNED BY: JKB  
DRAWN BY: KNG  
CHECKED BY: KMM

### CONSTRUCTION FLOOR PLAN

DRAWING NUMBER:  
**A02.1**

PROJECT INFORMATION:  
**EXPRESS**  
SPRINGFIELD TOWN CENTER  
584 CC RD. #847  
SPRINGFIELD, VA 22150

REVISIONS:  
1. 04/09/14  
2. 05/06/14

**SHREMSHOCK**  
Shremshock Architects, Inc.  
6700 S. Slatersville Rd., Westerville, OH 43081  
1-614-545-4550 | 1-614-545-4551 | shremshock.com  
Gerald S. Shremshock, Architect  
Timothy J. Shremshock, Architect

ELITE CONSTRUCTION GROUP  
LAKE JACKSON, TX  
PHONE: 979-285-0712  
NOTE: THESE PRINTS HAVE BEEN REDUCED BY 50 PERCENT SCALE WILL BE 50 PERCENT OF WHAT IS NOTED ON PLANS

DATE ISSUED: 02/14/2014  
DESIGNED BY: JKB  
DRAWN BY: KNG  
CHECKED BY: KMM

### CONSTRUCTION FLOOR PLAN

DRAWING NUMBER:  
**A02.1**